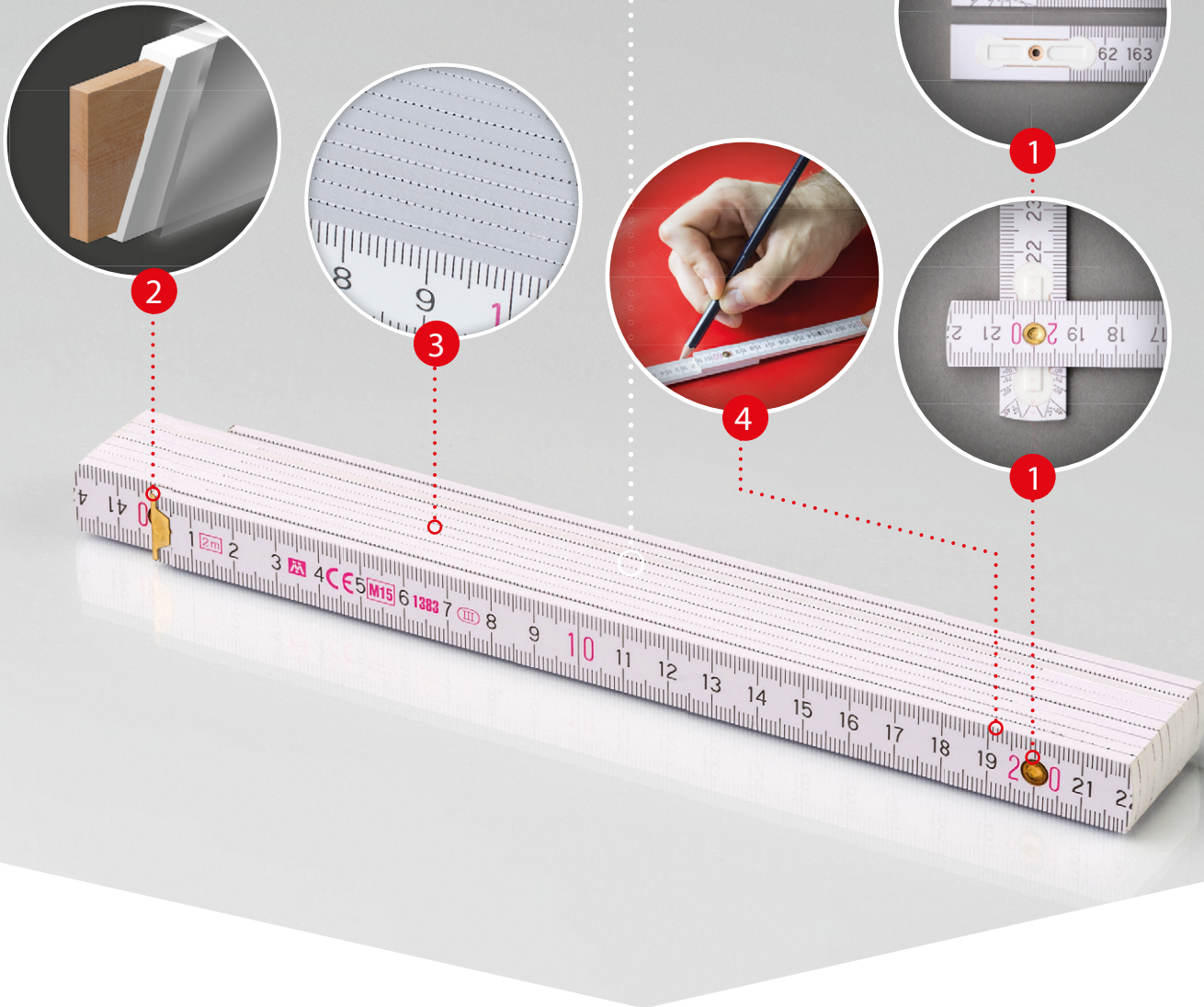


MTX-B72



Ideal for promotional print

Wooden folding ruler, type MTX-B72

- 10 wooden parts – 2 m with dimensions of 3.2 mm x 16 mm
- material: beechwood / hornbeam
- hidden polyamide joints, visible rivet

❶ **Type of joint** – hidden joints are made of polyamide and fiberglass. The steel rivet is visible. The joints are greased with mineral Vaseline for comfortable use of the ruler.

❷ **Surface treatment of wooden parts** – double-layered water-soluble paint. UV environmentally friendly coating of the top layer protects the ruler from the effect of thinner.

❸ **Compact space of the ruler** – the whole surface of the ruler can be used for promotional purposes. The adjacent wooden parts form a compact surface for the smooth print. UV coating enables the wrong print to be washed away easily and replaced with different one.

❹ **Straight segments** – the smooth wooden parts without grinding enable straight lines to be drawn easily.